



L4471V10B-00 SKU4471

Meal replacement for weight control

Made with high-quality soy protein, fibre and vitamins & minerals, Formula 1 offers both great nutrition and convenience.

Enjoy Formula 1 shake as a nutritional breakfast, lunch or dinner to support your active lifestyle and weight management goals*.

Formula 1 shake contains 25 vitamins and minerals, including vitamin D which contributes to the normal function of the immune system, and vitamin C which contributes to the reduction of tiredness and fatigue.

Formula 1 is made of ingredients that are vegan sourced, is gluten free and contains no artificial flavours.

You no longer have to choose between healthy meals and convenience - the Formula 1 shake is quick and easy to prepare!

DIRECTIONS FOR USE: Enjoy a Formula 1 shake every day as a nutritious meal. Gently shake the canister prior to each use as content may settle. To prepare a delicious shake, mix two scoops of powder (26 g) with 250 ml of cold, semi-skimmed milk (1.5 % fat) or for a vegan friendly and naturally lactose free shake, with 250 ml of fortified soy beverage. Looking for a healthy meal without using milk or soy beverage? Try Formula 1 with Protein Drink Mix and water. Enjoy this product within a balanced and varied diet, as part of a healthy, active lifestyle.

Quick and easy to prepare



* **For weight control:** Substituting two of the main daily meals of an energy restricted diet with meal replacements contributes to weight loss. Replace two meals per day with a delicious Formula 1 drink and take a balanced meal.

* **For balanced nutrition support and weight maintenance:** Substituting one of the main daily meals of an energy restricted diet with a meal replacement contributes to the maintenance of weight after weight loss. Replace one meal per day with a delicious Formula 1 drink and eat two balanced meals.

Meet your daily caloric goals by also consuming nutritious snacks.

Store with lid closed in a cool, dry place.

30-day money-back guarantee. This guarantee does not affect your statutory rights. This exclusively formulated product is only available through Herbalife Nutrition Independent Distributors.

This product is intended for use as part of an energy restricted diet and with other foodstuffs, in conjunction with regular physical activity. It is important to maintain adequate fluid intake. It is important to follow these directions as indicated.

Herbalife Nutrition advises before beginning any weight management program, it is advisable to consult a physician. A healthy weight management program should include modest caloric intake, balanced diet and regular physical activity.

Formula 1 is a meal replacement shake mix for weight control and healthy nutrition with sugars and sweetener.

Best before and lot number: See base of container

NET WEIGHT: 550 g



Formula 1
Healthy Meal

Meal replacement shake mix for
weight control and healthy nutrition

- 25 Vitamins and minerals
- High protein

mint &
chocolate
natural flavourings



Nutritional information

Serving size: 26 g

Servings per container: 21

	Per 100 g	Per 26 g serving with 250 ml semi-skimmed milk (1.5 % fat)	Per 26 g serving with 250 ml soy beverage (fortified)
Energy	1664 kJ 398 kcal	953 kJ 227 kcal	897 kJ 214 kcal
Fat	9.9 g	6.7 g	6.3 g
of which:			
saturates	1.9 g	3.1 g	1.0 g
mono-unsaturates	2.4 g	1.7 g	1.6 g
polyunsaturates	5.5 g	1.5 g	3.6 g
Carbohydrate	33 g	21 g	21 g
of which: sugars	23 g	(12 g from milk) 18 g	(9 g from soy beverage) 15 g
Fibre	18 g	5 g	5 g
Protein	35 g	18 g	16 g
Salt	1.2 g	0.6 g	0.6 g

	% RI**	% RI**	% RI**
VITAMINS			
Vitamin A	1180 µg RE..... 148 %	343 µg RE..... 43 %	448 µg RE..... 56 %
Vitamin D	7.9 µg..... 158 %	2.1 µg..... 42 %	4.9 µg..... 98 %
Vitamin E	19 mg α-TE..... 158 %	5.1 mg α-TE..... 43 %	5.3 mg α-TE..... 44 %
Vitamin K	118 µg..... 157 %	31 µg..... 41 %	38 µg..... 51 %
Vitamin C	119 mg..... 149 %	35 mg..... 44 %	31 mg..... 39 %
Thiamin	1.2 mg..... 109 %	0.42 mg..... 38 %	0.39 mg..... 35 %
Riboflavin	0.35 mg..... 25 %	0.55 mg..... 39 %	0.56 mg..... 40 %
Niacin	24 mg NE..... 150 %	6.5 mg NE..... 41 %	7.3 mg NE..... 46 %
Vitamin B6	1.7 mg..... 121 %	0.56 mg..... 40 %	0.52 mg..... 37 %
Folic acid	250 µg..... 125 %	75.8 µg..... 38 %	65.0 µg..... 33 %
Vitamin B12	1.0 µg..... 40 %	1.3 µg..... 52 %	2.4 µg..... 96 %
Biotin	73 µg..... 146 %	28 µg..... 56 %	19 µg..... 38 %
Pantothenic acid	6.8 mg..... 113 %	2.7 mg..... 45 %	2.0 mg..... 33 %
MINERALS			
Potassium	1420 mg..... 71 %	768 mg..... 38 %	682 mg..... 34 %
Calcium	460 mg..... 58 %	423 mg..... 53 %	435 mg..... 54 %
Phosphorus	890 mg..... 127 %	466 mg..... 67 %	342 mg..... 49 %
Magnesium	431 mg..... 115 %	143 mg..... 38 %	151 mg..... 40 %
Iron	22 mg..... 157 %	5.8 mg..... 41 %	6.8 mg..... 49 %
Zinc	12 mg..... 120 %	3.9 mg..... 39 %	3.7 mg..... 37 %
Copper	3.0 mg..... 300 %	0.81 mg..... 81 %	1.2 mg..... 120 %
Manganese	3.3 mg..... 165 %	0.86 mg..... 43 %	1.0 mg..... 50 %
Selenium	79 µg..... 144 %	21 µg..... 38 %	26 µg..... 47 %
Chromium	80 µg..... 200 %	21 µg..... 53 %	21 µg..... 53 %
Molybdenum	77 µg..... 154 %	31 µg..... 62 %	20 µg..... 40 %
Iodine	230 µg..... 153 %	68.3 µg..... 46 %	59.8 µg..... 40 %

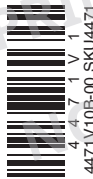
** Reference intake

INGREDIENTS: Soy protein isolate, fructose, inulin, gluten-free oat fibre, soy oil, chocolate bits (3.8 %) (sugar, cocoa mass, cocoa butter, natural flavouring, emulsifier (lecithin)), minerals mixture (calcium citrate, magnesium oxide, ferrous fumarate, sodium selenite, zinc oxide, manganese carbonate, chromium (III) chloride, potassium iodide, cupric citrate), potassium phosphate, emulsifier (soy lecithin), flaxseed powder, thickeners (xanthan gum, guar gum), natural flavouring, vitamins mixture (Vitamin C (L-ascorbic acid), Vitamin E (DL-alpha-tocopheryl acetate), Niacin (nicotinamide), Vitamin A (retinyl acetate), Biotin (D-biotin), Pantothenic acid (calcium D-pantothenate), Vitamin D (cholecalciferol), Folic acid (pteroylmonoglutamic acid), Vitamin K (phyloquinone), Vitamin B6 (pyridoxine hydrochloride), Thiamin (thiamin hydrochloride), Vitamin B12 (cyanocobalamin), Riboflavin), sodium chloride, sweetener (sucralose), colour (copper complexes of chlorophyllins), papaya fruit powder, parsley herb powder, blueberry fruit powder, pomegranate fruit powder, anti-caking agent (silicon dioxide). Allergy advice: for allergens, see ingredients in bold.

Imported and distributed by: HERBALIFE INTERNATIONAL LUXEMBOURG S à R.L.
16 Avenue de la Gare, L-1610 Luxembourg
Traded in the U.K. by: HERBALIFE EUROPE LIMITED
The Atrium, 1 Harefield Road, Uxbridge, Middlesex UB8 1HB, U.K.



¹ logo applies to the canister
©2024 HERBALIFE NUTRITION



L4471V10B-00 SKU4471